

# MUNI

## **PhD students & Grant opportunities**

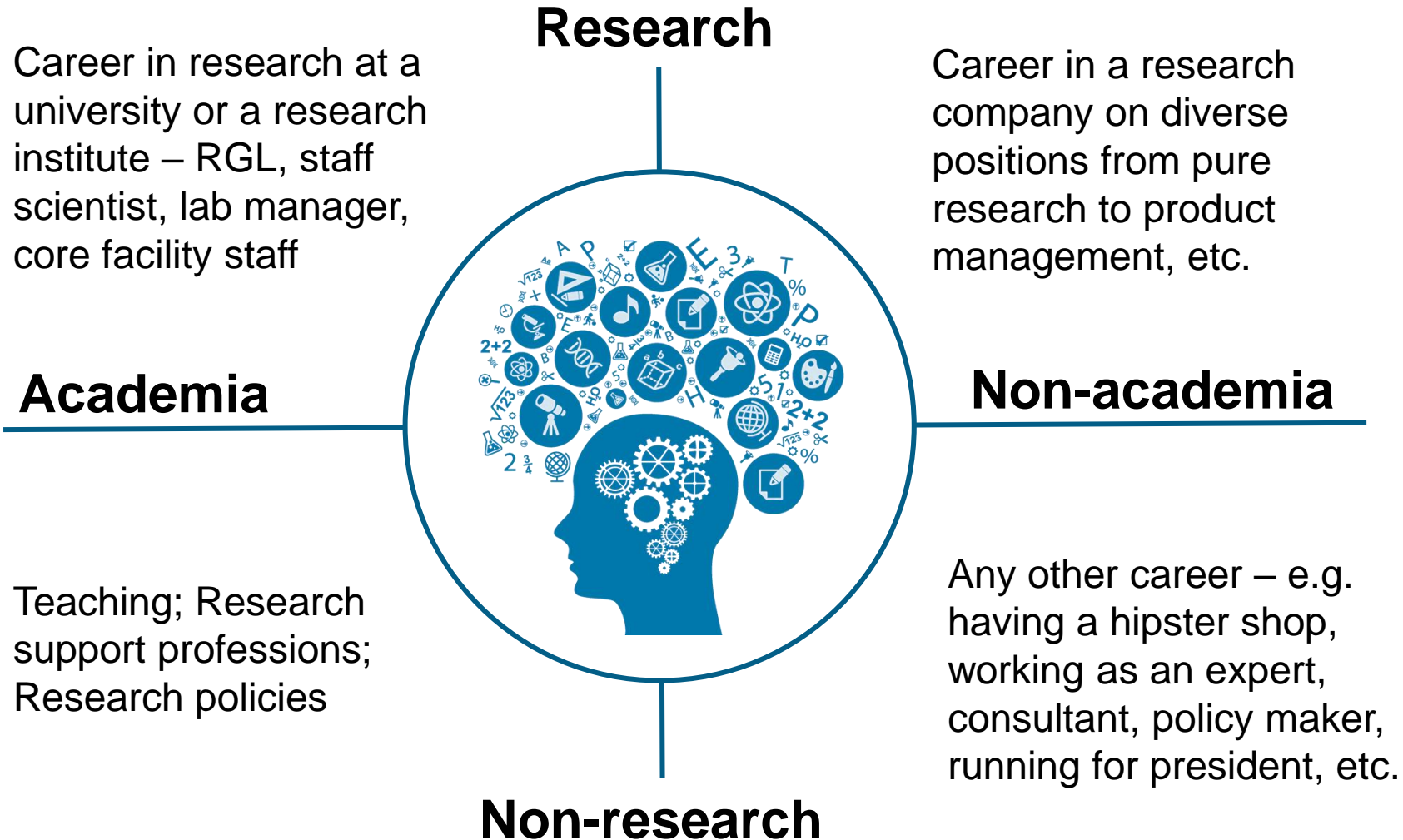
Collecting experience at junior stage for better research career development

Jakub Zeman

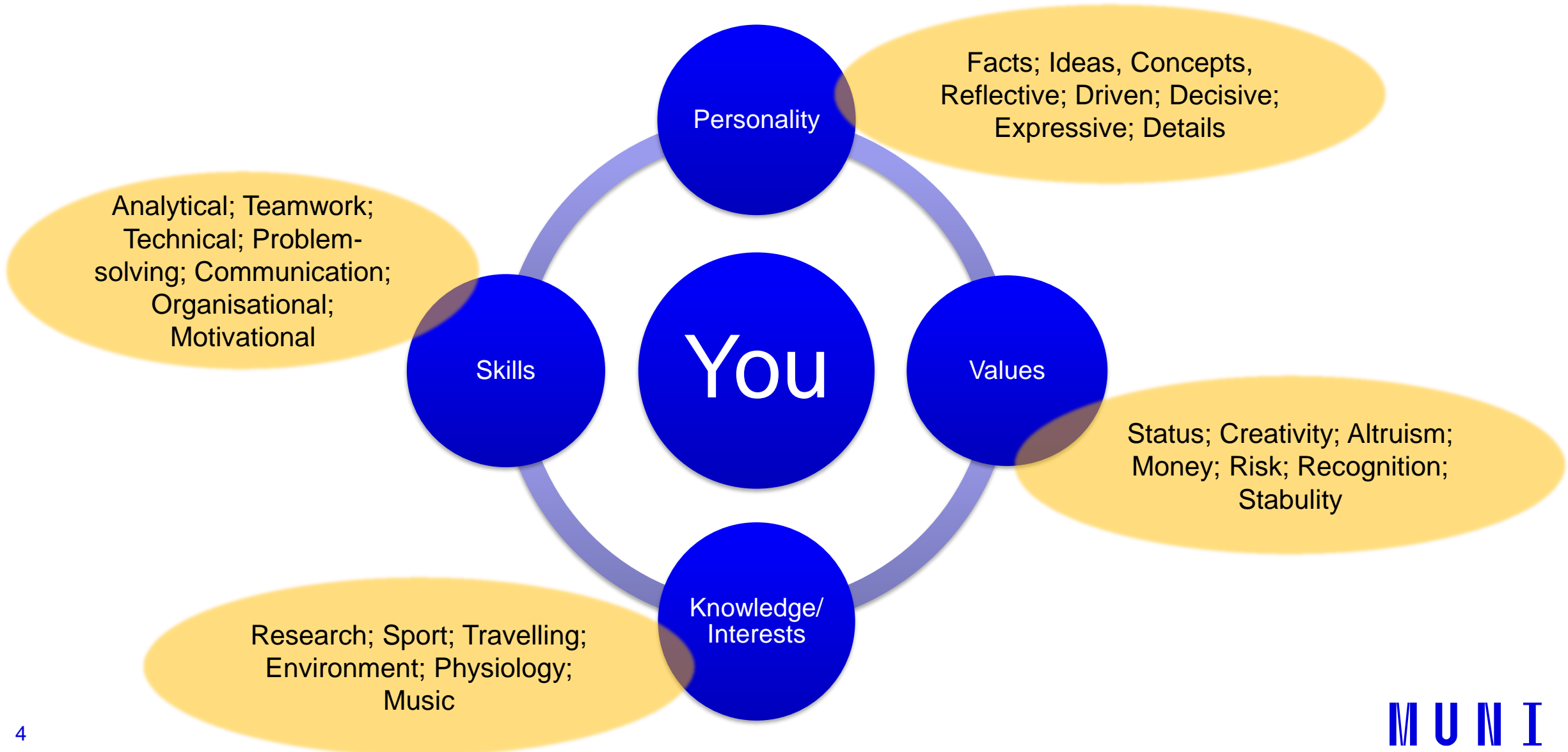
Research Office, MU Rector's Office, [zeman@rect.muni.cz](mailto:zeman@rect.muni.cz)

# CAREER PATH

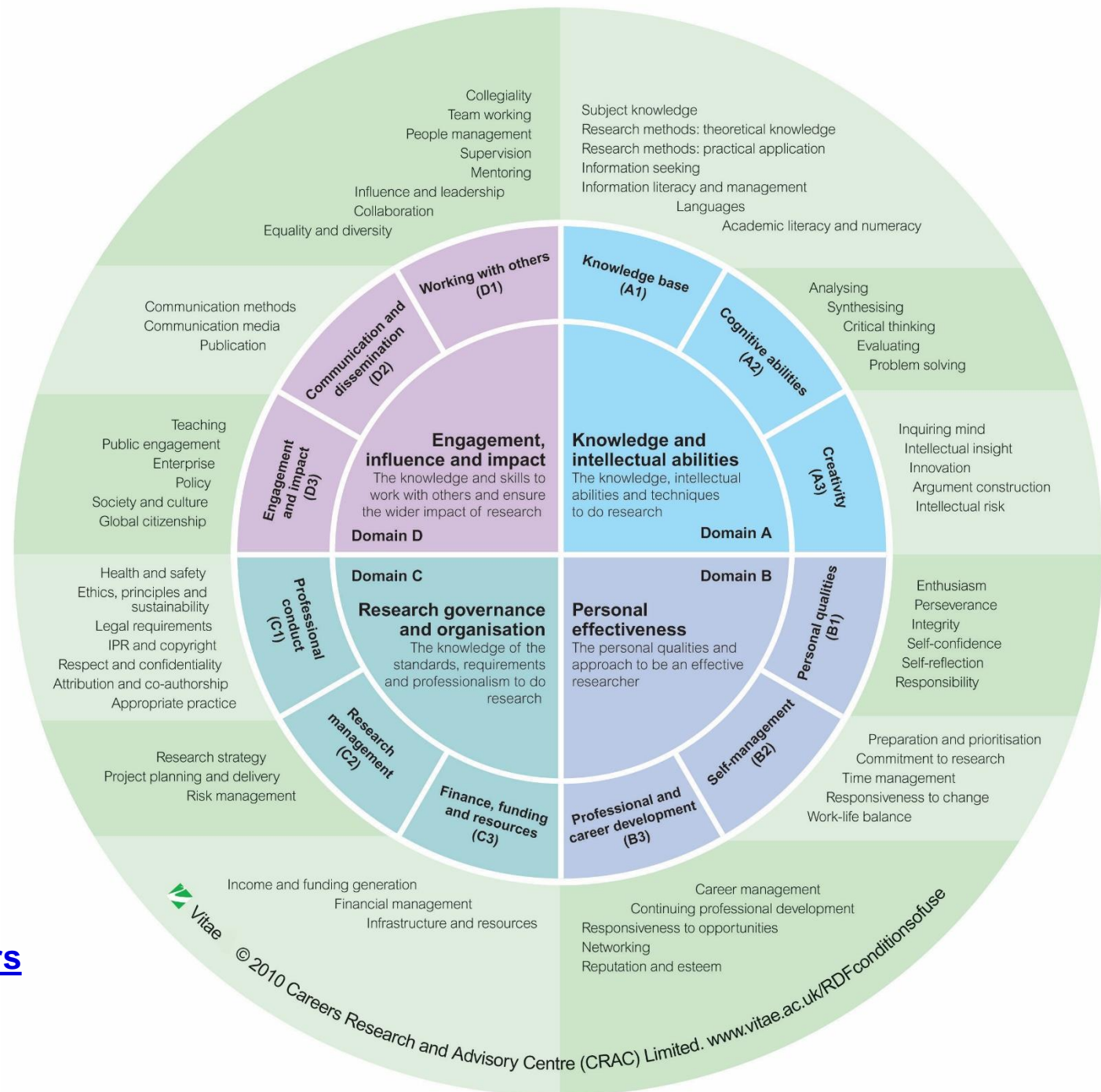
# Major options – major decisions



# Self-Awareness



# Self-Reflection



<https://www.vitae.ac.uk/researcher-careers>

**DIVERSITY**

# Gathering experience

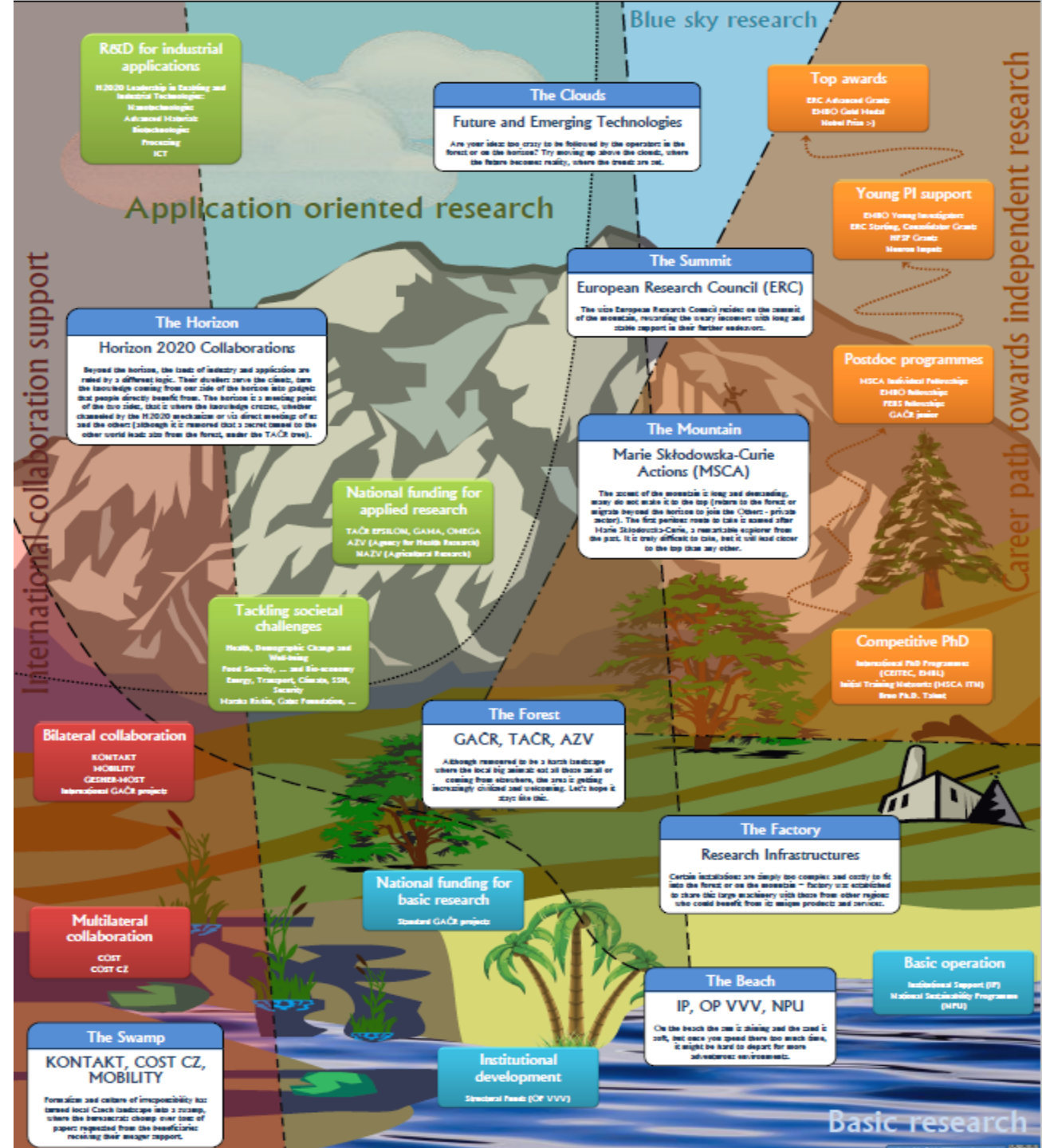
## Be active...

- **Mobility** – e.g. ERASMUS+ (overlooked opportunity), MSCA-DN...
- **Interdisciplinary & Novelty** and trends in your field – conferences, crossing boundaries and new links and niches
- **Teaching** experience; and even supervising your juniors
- **Communication** of science – Public outreach activities, dissemination within (international) projects
- **Open Science** principles

## FIND YOUR „BIOTOPE”

**Where do you like it? Don't wait and just go there!**

# Funding Landscape





**IMMEDIATE**  
**Grant opportunities**  
**for PhD**

# (Inter)national grants

**Internal:** Specific Research, IGA  
**Regional:** Brno PhD Talent  
**National:** TAČR Sigma and mostly as team members - GAČR, AZV, Země, other Ministries' grants)  
**International:** (EU) – MSCA-DN, MSCA-SE, ERASMUS+, team members

Internal: GAMU  
Regional: (MSCA-COFUND)  
**National:** TAČR, GAČR Junior, Ministry of Health (AZV), Inter-Excellence (Ministry of Education), other ministries' grants  
**International (EU)** – MSCA-PF, EMBO Fellowships, FEBS , and other postdoctoral fellowships, ERC – Starting Grant

**National:** Standard GAČR, AZV, etc.  
**International:** ERC Consolidator Grant  
ERC Advanced Grant

Students, PhD students

Postdocs

(Junior) Group Leaders

# IMMEDIATE Grant opportunities for PhD

## Internal – Masaryk University

- Specific Research at MU – information of MUNI Portal
  - A grant *Students' research projects* – to support project in medicine, science, informatics, humanities, social sciences, sports, law and economics.
  - Each faculty specifies the rules
  - Hence seek specific information at your faculties

# Student specific research grants

The aim of the support is to involve students in the research areas solved in their faculties. PhD students along with their supervisors may submit a research project related to their field of study at Masaryk University. Master degree students may join the projects as team members.

**The competition is organized by faculties.** All faculties follow the same principles of the student grant competition set out in Masaryk University [Directive No. 3/2020 Rules of Specific University Research](#). Faculties may have special requirements on the applicants. Please check your faculty web page or contact faculty research office.

Faculty departements: [FF](#) [FaF](#) [PřF](#) [FI](#) [FSS](#) [PdF](#) [FSpS](#) [PrF](#) [LF](#) [ESF](#) [CEITEC MU](#)

**MUNI** Employee Portal

## Open call

### Terms for 2022/23

Proposal submission deadline	<b>31. 10. 2022</b>
Evaluation	<b>1. 11. 2020 – 25. 11. 2022</b>
Realization of the project	<b>1. 1. 2023 - 31. 12. 2023</b>

# IMMEDIATE Grant opportunities for PhD – regional



- 12-pages application
- For **25 students** of 4 major universities located in Brno
- **The drawback is that it is only for students of Life sciences or technology!**

Brno Ph.D. Talent is a competition for a yearly scholarship of CZK 110,000 for 3 years.

#### ELIGIBILITY CRITERIA (YOU MUST):

- study full-time at a partner university in Brno
- be enrolled in the first year (it means to be in the first or second semester) in a doctoral study program in the autumn semester of 2022
- be in the age of 32 years including at the time of registration
- study technical or natural sciences

#### PARTNER UNIVERSITIES:

- Brno University of Technology ([BUT](#))
- Masaryk University ([MU](#))
- Mendel University in Brno ([MENDELU](#))
- University of Veterinary and Pharmaceutical Sciences Brno ([VFU](#))

Table 1: Time schedule of the Brno Ph.D. Talent 2022 Competition

Activity	Date
Registration of Applicants	1. 9. - 18. 9. 2022
Formal Review of Applications (1st Round)	19. 9. 2022 - 23. 9. 2022
Expert Review of Applications (2nd Round)	3. 10. 2022 - 17. 11. 2022
Final Project Presentations (3rd Round)	30. 11. 2022 - 9. 12. 2022
Publication of Competition Results	12. 12. 2022

We will be happy to answer all your possible questions:

**E-mail:** [barbora.dofkova@jcmm.cz](mailto:barbora.dofkova@jcmm.cz)

**Phone:** +420 725 503 085

# IMMEDIATE Grant opportunities for PhD - National

- **TAČR Sigma – Technology Agency of the Czech Republic**

- Launched in 2022, **for early career researchers in February 2023!**
- The parameters of this scheme should be similar as in case of **TAČR Zéta**, predecessor of **Sigma** – which is only in preparation
- The purpose of **Zéta** was to **support young generation of researchers up to 35** (Principle investigator)
- Collaboration with **industry** or **Application guarantor** (someone who is going to exploit your results) was mandatory
- We expect the basic features of **TAČR Sigma** will be similar
- However, specific conditions of **TAČR Sigma** are still unknown to this date!
- We expect the first call might be launch in the middle of 2022

More information on TAČR scheme on their website: <https://www.tacr.cz/>

**Also contact your faculty's grant support staff for a detailed explanation and support**

# From - „Programme to Support Applied Research and Innovation SIGMA“

## **Sub-objective 2 – Early-stage researchers<sup>7</sup> and equal of opportunities in applied research projects (SO2)**

**Definition of the objective:** To increase the involvement of early-stage researchers and to provide equal opportunities for men and women in the competition of applied research.

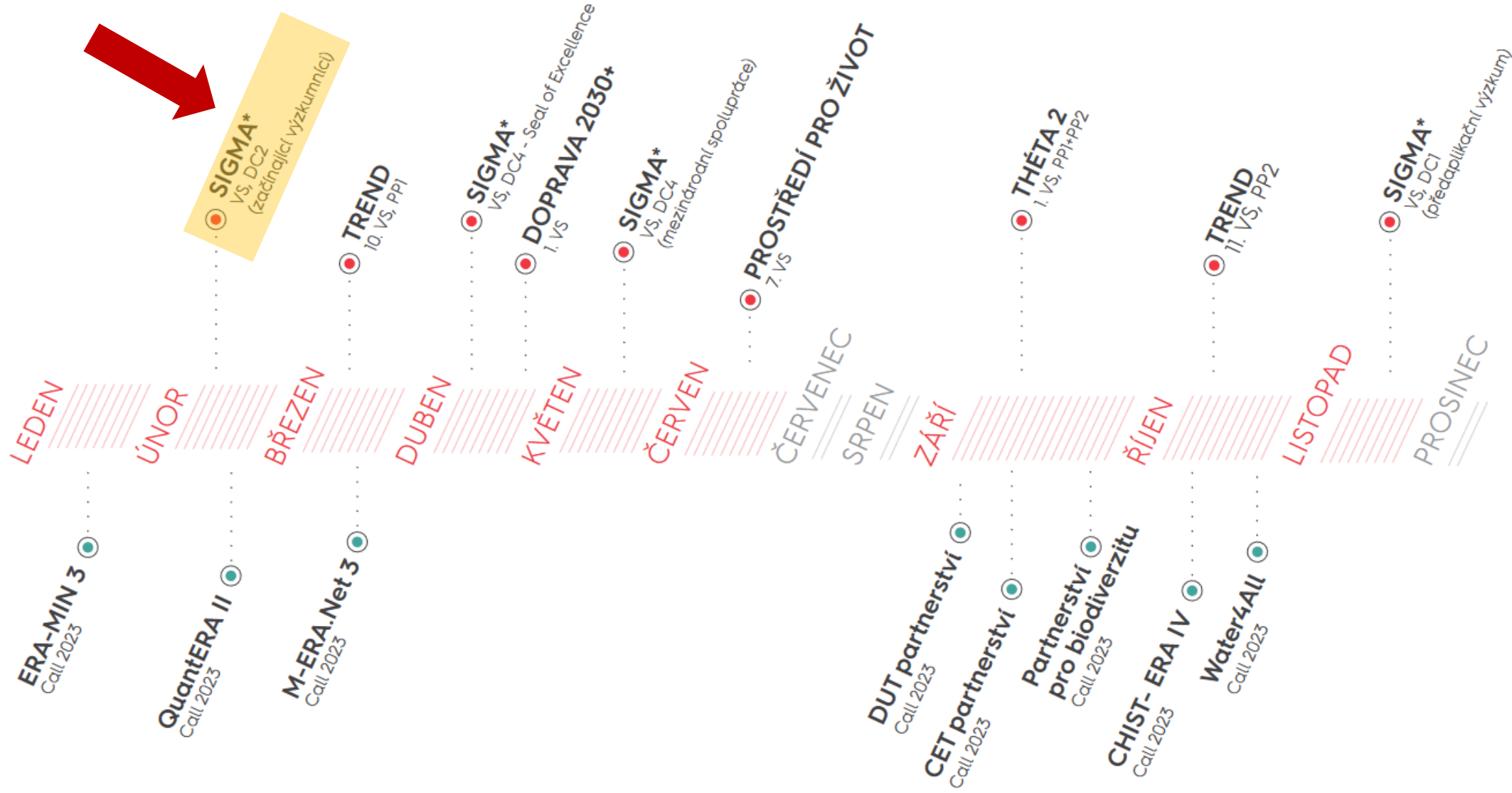
The collaboration of early-stage researchers in performing specific projects directly with subjects from applied practice will be supported in all areas of applied research. In projects achieving this sub-objective, conditions will be set for applicants and beneficiaries, which will lead to the provision of equal opportunities for men and women in applied research. The sub-objective follows on from the activities of the ZÉTA programme.

By its focus, the sub-objective contributes to the fulfilment of the measures defined by the National Research, Development and Innovation Policy of the Czech Republic 2021+, in particular measure 10.

---

<sup>7</sup> Early-stage researchers are students of higher secondary or tertiary education, including doctoral programmes or persons whose successful completion of Master's or doctoral studies was a maximum of 5 years ago.

# HARMONOGRAM VEŘEJNÝCH SOUTĚŽÍ A VÝZEV PRO ROK 2023





# IMMEDIATE Grant opportunities for PhD - International

- Apart from some **mobility grants** and [ERASMUS+](#) you only can be a partner = no independent grants,
- **very accessible funding**, a chance for you to network and prepare for future collaborations!
- **Marie-Skłodowska Curie Actions – Doctoral Networks (MSCA-DN)**
  - DN's aim is to train a new generation of creative, entrepreneurial and innovative early-stage researchers
  - Practically speaking a unique chance to get a **full-time decent funding** throughout your PhD (well, for 36 month exactly!)

**You cannot apply for this project independently, but...**

# IMMEDIATE Grant opportunities for PhD - International

**You can get involved, nonetheless...**

- **Marie-Skłodowska Curie Actions – Doctoral Networks (MSCA-DN)**
  - You have two options:
    - Support your supervisor in submitting MSCA-DN proposal and have you involved in the secondments plan
    - Take a look at ads of organisations implementing DN and recruiting (for instance at EURAXESS)
- Another option, of course, can be recruitment of an **ERC holder**, or any **other international grant holder**

# IMMEDIATE Grant opportunities for PhD

## Job offers at EURAXESS

01  
DEC

AUSTRIA

POLYMER COMPETENCE CENTER LOEBEN GMBH

2022

### 13 PhD positions in the MSCA Doctoral Network MIRELAI

13 PhD positions are available in the Marie Skłodowska-Curie Doctoral Network "MIRELAI - Microelectronics RELiability driven by Artificial Intelligence". MIRELAI is the first European Industrial Doctorate Programme that trains researchers for the next generation of reliable microelectronics, more...

<b>Sector</b>	Private with public mission
<b>Research Field</b>	EngineeringElectronic engineering
<b>European Research Programme</b>	HE / MSCA
<b>Researcher Profile</b>	First Stage Researcher (R1)

19  
DEC

GERMANY

UNIVERSITY OF STUTTGART

2022

### Open position for a PhD candidate: Network Metal-Containing Radical Enzymes – MetRaZymes EU-funded Marie Skłodowska-Curie Actions (MSCA) Doctoral Network

The pharmaceutical, chemical and polymer industries are cornerstones of Europe's economy. A key element for their transition to more sustainable processes and to innovative new compounds is biocatalysis. Of particular interest are metallo-enzymes, i.e. proteins that host a metal cofactor. As

# IMMEDIATE Postdoctoral opportunities

## Outlook for your „life after PhD“

If you are serious about career in research –  
**go abroad for a POSTDOC(s)!**

- Obviously [MSCA-PF](#)
- But also plenty of other [postdoctoral funding schemes in Europe](#),  
or overseas...

# WHO IS IT FOR?

- **Postdocs = in possession of doctoral degree** (also those who successfully defended their doctoral thesis) **before the call deadline (13. 9. 2023)**
- And **not more than 8 years after PhD** (doctoral thesis defence)
- Who have not submitted a MSCA-PF proposal in the previous call (2021) with a **score <70%**
- **Any field of science & bottom-up topics!**



## 8 EVALUATION PANELS:

- Chemistry (CHE), Social Sciences and Humanities (SOC), Economic Sciences (ECO), Information Science and Engineering (ENG), Environment and Geosciences (ENV), Life Sciences (LIF), Mathematics (MAT), Physics (PHY).
- Each panel will establish **two ranked lists**, one for **European** and one for **Global Postdoctoral Fellowships**.

## MOBILITY RULE

Applicants have not resided/studied/worked in the country of their host organization for more than 12 months in the 36 months immediately prior to the deadline

# MOBILITY

## Essential and mandatory aspect of any MSCA

Two types of *Postdoctoral Fellowships* – EF & GF with separate budgets

Option of **SECONDMENTS** within EF, GF

- **anywhere** in the world
- EF – **up to 1/3** of the EF
- GF – **up to 1/3** of the outgoing phase, max 3 months can be spent at the start of the project at HI or other organization being part of the project
- Short visits possible, too...

### European Fellowships (EF)

- within EU member states of Associated countries (including UK)
- 12-24 months
- Any nationality
- Part time possible (min 50% on action)

### Global Fellowships (GF):

- 12-24 outgoing (= in a Third country) &
- 12 months **mandatory** return phase in MS/AC (any organisation!)
- For MS/AC nationals and long-term residents
- Part time possible except for outgoing phase

ANY Third country (12-24 MONTHS)

Mandatory return to the EU/AC (12 MONTHS)

### Optional **ADDITIONAL PERIOD!**

- Up to 6 months in non-academic sector in an **EU MS or AC**
- <sup>22</sup>Letter of commitment mandatory

# OBJECTIVES OF MSCA PROGRAMME - BRIEFLY SUMMARIZED

Excellent research within mutual knowledge  
EXCHANGE = TRAINING-THROUGH-RESEARCH

Boost research CAREER  
DEVELOPMENT of FELLOWS

Knowledgeable COMMUNICATION of the  
results

# Keep yourself informed!

- Do you know your local Research support officers?
- Get in touch with them, ask them to be posted with grant news
- Submit to newsletters of relevant grant funding agencies
- Watch [Technology Centre Prague website](#) for news and events
- Watch [Horizon Europe Portal](#) – calls, success stories, events, news...
- Many others – European Commissions sources, other national source ([Kowi](#), [Euresearch](#), [UKRI](#) for UK, ...)



# Keep yourself trained!

- FRESHERS
  - **dedicated specifically to PhD students!**
  - basics of grant writing and project management, research career development, Intellectual Property Right, Ethics in research, Communication of Science, Open Science Principles....
- [PhD and Postdocs trainings](#) at [CEITEC](#), see what events CEITEC has organised this year

# Events and trainings for researchers!

- Examples of **Research support at MU**
  - [How to write a competitive proposal](#) – a regular event
  - Information „days“ on national and international grant schemes, such as Infodays on GAČR, TAČR, AZV, MSCA-IF, MSCA-RISE. MSCA-ITN, ERC
  - [MSCA-PF Workshop](#) (usually in May/June; a two-day event for serious applicants)
  - Many more + customised consultations and guidance for junior and senior researchers

**We wish you a wonderful PhD at the MU!**

**Be active, inquiring, work hard and  
HAVE FUN!**

**M U N I**

**T H A N K Y O U**

**F O R Y O U R A T T E N T I O N**